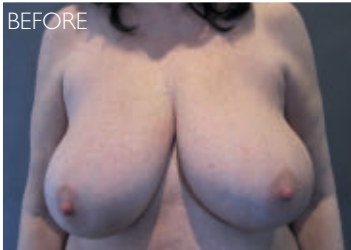


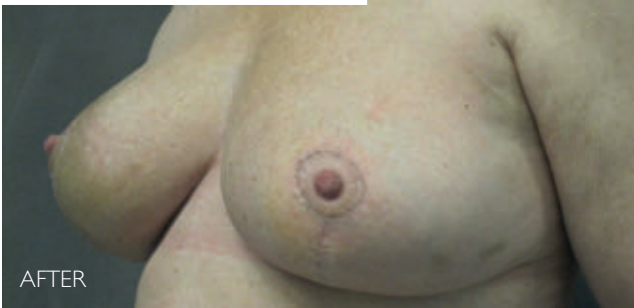
BREAST REDUCTION – LIFE AUGMENTATION

Providing a complete package for women seeking breast surgery with an aesthetic style.



BEFORE

Before and after photos of patients who have undergone this procedure with Dr Choy. Results may vary from person to person.



AFTER



BEFORE

Before and after photos of patients who have undergone this procedure with Dr Choy. Results may vary from person to person.



AFTER



Dr Ellis Choy
Specialist plastic surgeon FRACS (Plast).
Cosmetic, reconstructive and breast surgery

Dr Ellis Choy is both a qualified specialist breast and plastic surgeon. He has a special focus on the provision of a comprehensive breast surgery service (the full spectrum of cosmetic, reconstructive and oncological breast surgery). This allows him to provide the ultimate breast care for all his patients through the Swan Breast Sanctuary at his Zilver Lining Plastic &

surgical plan must provide the patient with optimal breast shape and size with minimal scars.

Dr Choy combines the latest advances in breast reduction and breast lift techniques and artistry in his quest to deliver the most beautiful surgical results. He places strong emphasis on the optimal balance of size, shape and symmetry in achieving the ultimate breast harmony. His specialised and professional approach provides a complete package for patients seeking breast enhancement surgery with an aesthetic style. This is more than breast reduction: this is life augmentation.

Cosmetic Surgery. Some of the signature procedures he performs for women of varying ages are breast reductions and breast lifts. Large, heavy or simply droopy breasts can be a source of considerable discomfort and embarrassment to many women. Young women with huge breasts can experience severe restrictions in sports and various other social activities. Problems resulting from poor body image may hinder psycho-social development at a crucially important stage in a young woman's life. For more mature ladies who once had beautiful, uplifted breasts, their drooping breasts often prove distressing. For these reasons, among others, a woman may seek breast reduction or lift procedures as a prospect of relief from long-standing problems or as a means to recapture youthful breast contours.

In the past, the goal of breast-reduction surgery was just to remove the excess weight of the overly large breasts. Today, patients of all ages approach these procedures with higher expectations, and the

DR CHOY AND HIS SWAN BREAST SANCTUARY AT ZILVER LINING PROVIDE THE COMPLETE CARE FOR A WIDE RANGE OF BREAST CONCERNS, INCLUDING:

- > Reduction of large breasts
- > Lifting and/or enlargement of droopy breasts
- > Augmentation of small to medium-sized breasts
- > Correction and enhancement of disproportionately sized breasts
- > Reconstruction of breasts following ablative breast cancer surgery

Dr Ellis Choy MS(Plast), FRACS(Plast). Member of the Australian Society of Plastic Surgeons.
Medical director at Zilver Lining Plastic & Cosmetic Surgery, Level 2, 115 Sailors Bay Road, Northbridge, NSW.
Freecall enquires: 1800 DR CHOY (1800 372 469) or visit www.zilverlining.com.au.